



Sourcing the Critical Minerals for the Future



5 April 2023

ASXRR1 (+)





Disclaimer



Competent Person's Statement

Information in this announcement that relates to exploration results is based on and fairly represents information and supporting documentation prepared and compiled by Mr Steve Vallance, who is a Member of the Australian Institute of Geoscientists. Mr Vallance is the Exploration Manager for Reach Resources Limited employed on a full-time basis. Mr Vallance has sufficient experience, which is relevant to the style of mineralisation and type of deposit under consideration and to the activity which he is undertaking to qualify as a Competent Person, as defined in the 2012 Edition of the Australasian Code for Reporting Exploration Results, Mineral Resources and Ore Reserves. Mr Vallance consents to the inclusion in the announcement of the matters based on this information in the form and context in which it appears.

Forward Looking Statement

This report contains forward looking statements concerning the projects owned by Reach Resources Limited. If applicable, statements concerning mining reserves and resources may also be deemed to be forward looking statements in that they involve estimates based on specific assumptions. Forward looking statements are not statements of historical fact and actual events and results may differ materially from those described in the forward looking statements as a result of a variety of risks, uncertainties and other factors. Forward looking statements are based on management's beliefs, opinions and estimates as of the dates the forward looking statements are made and no obligation is assumed to update forward looking statements if these beliefs, opinions and estimates should change or to reflect other future developments.



Corporate Snapshot



Board & Management

Experienced team of professionals



Mr Jeremy Bower
CEO

Mr Bower is an experienced executive and project manager demonstrated across the mining and agricultural sectors and brings a unique skill set that combines practical on ground experience with acute environmental legislation knowledge and strategic mining experience that is highly relevant in an ESG focussed market.



Mr Robert Downey
Non-Executive Chairman

Mr Downey is admitted as a barrister and solicitor in Western Australia and has practiced as a corporate and commercial lawyer for over 20 years.



Mr Sam Wright
Non-Executive Director

Mr Wright has twenty years' experience in the administration of ASX listed companies, corporate governance and corporate finance.



Mr Matthew O'Kane
Non Executive Director

Mr O'Kane is an experienced mineral industry executive and company Director with 25 years' experience in the mining, commodities and automotive sectors.

Corporate Insights

A corporate insight into our company

ASX Code	RRI.ASX
Share Price (4 April 2023)	\$0.004
Shares on issue	~2,750M
Market Cap.	~\$10M
Cash and cash equivalents	~\$1.725M
Debt	nil



2023 Strategy

In Focus



REACH
RESOURCES

Gold

PRIMROSE GOLD PROJECT UNDERPINS THE STRATEGY WITH ITS INFERRED MINERAL RESOURCE

A resource of ~1MT at 3.2g/t for 105,000 ounces Au which remains open in all directions. The Company plans to undertake further resource drilling this year and look for opportunities to monetise this asset to ideally fund future exploration works in the Gascoyne.



Upstream

Rare Earths

SYSTEMATIC EXPLORATION TO DRIVE MORE REE DISCOVERY AND AIM FOR RESOURCE DEFINITION

High grade REE and Niobium results from limited rock chip sampling completed thus far give the Company the confidence to push ahead with more targeted exploration works this year.



Upstream

Battery Metals

EXPANDING OUR SCOPE INTO OTHER FUTURE METALS WITHIN THE GASCOYNE

With the recent acquisition of the Morrissey Hill Lithium project and the White Castles Manganese project the Company has made a deliberate decision to expand our critical mineral focus to diversify and expand the portfolio.



Upstream

REE Magnet Recycling

INVESTMENT IN RECYCLING OF REE MAGNETS THROUGH INNOVATIVE TECHNOLOGY

Reach has invested \$1.8M into REEcycle Inc. a private US based company that has a patented technology to separate the rare earth elements from discarded NdFeB permanent magnets. The technology developed at the University of Houston and 100% owned by REEcycle Inc. will generate another source of the future forward REE minerals.

Downstream

Gascoyne Focus

Legend



Gold



Rare Earths



Lithium



Manganese

ESG

REEcycle Technology

Environmental, Social & Governance at Reach Resources

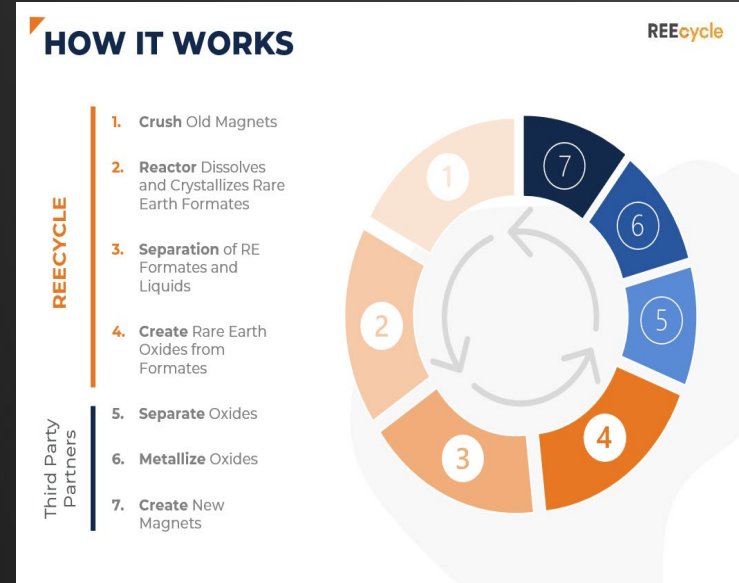
Reach Resources is proud to have just completed its first ESG report to set a baseline for the standards and commitments the Company is striving for to contribute to a sustainable future.

Our objective is to source the critical minerals required to power a cleaner and greener future for the planet. However, during this process we commit to respect the communities and environment whose land we explore. We commit to open and honest communication with the Traditional Owners of the land and other stakeholders such as pastoralists and nearby towns and communities. We commit to undertaking thorough and independent environmental assessments and upholding the relevant environmental legislations and policies before we disturb any land.

We commit to investing in technology that reduces the need for further mining in the future as evidenced already with our investment in REEcycle Inc, a rare earth magnet recycling technology.

We commit to striving to ensure that we use best practices so that our exploration reflects our desire to be a part of the clean green electric revolution.

As Reach Resources advances its ESG strategy, it will be sharing its efforts and impact regularly, in line with its annual reporting cycle.



Projects

- Diversified critical mineral portfolio
- Huge growth potential - Current low enterprise value leveraged to exploration success.
- Strategic location in the Gascoyne critical mineral hot-spot, adjoins other successful companies
- High grade 3.2g/t Au, 105,000 tonne Inferred Gold Resource provides opportunity to potentially fund Gascoyne exploration.



Rare Earths



Lithium



Manganese



Gold

Skyline



White Castles

Morrissey Hill



Camel Hill



Wabli Creek



Primrose

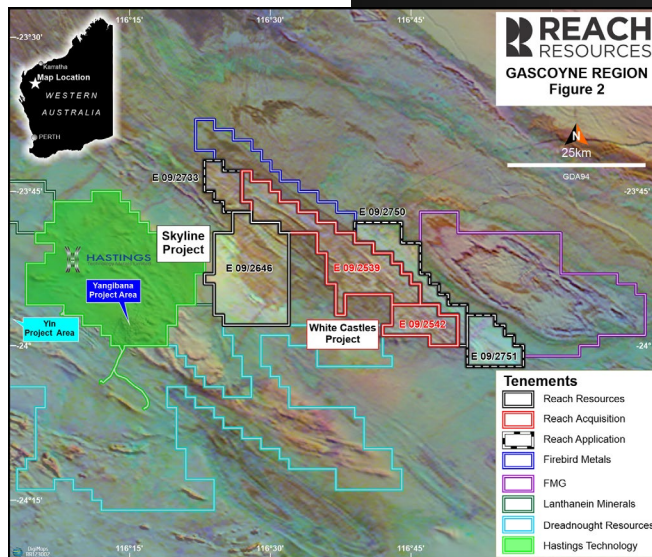
Skyline

REE/Base Metals

- Adjoin Hasting Technology Metals (ASX:HAS) Yangibana REE project 20.9MT Ore Reserve @ 0.9% TREO - 17 year mine life ¹
- West side of tenement identified REE targets with up to 3173ppm ² TREO from limited rock chip sampling program Oct '22

White Castles

Manganese



- High-grade rock-chip results up to 18% MnO₂ ³
- Multiple surface manganese outcrops over 50 km of continuous strike.
- Little to no exploration undertaken since 2010.
- Neighbours include FMG to the east, FRB to the north west and Dreadnought Resources (ASX:DRE) to the south west.
- The tenements lie within 5 km of recent anomalous REE results from Reach's Skyline project

Notes:

¹ Refer HAS ASX release 06/02/23 "Yangibana ore reserves increase by 25%"

² Refer RR1 ASX release 13/12/22 "Outstanding High Grade Niobium, Yttrium & Dysprosium Assays"

³ Refer RR1 ASX release 02/02/23 "Reach adds high grade Manganese to critical mineral portfolio"

Rare Earths

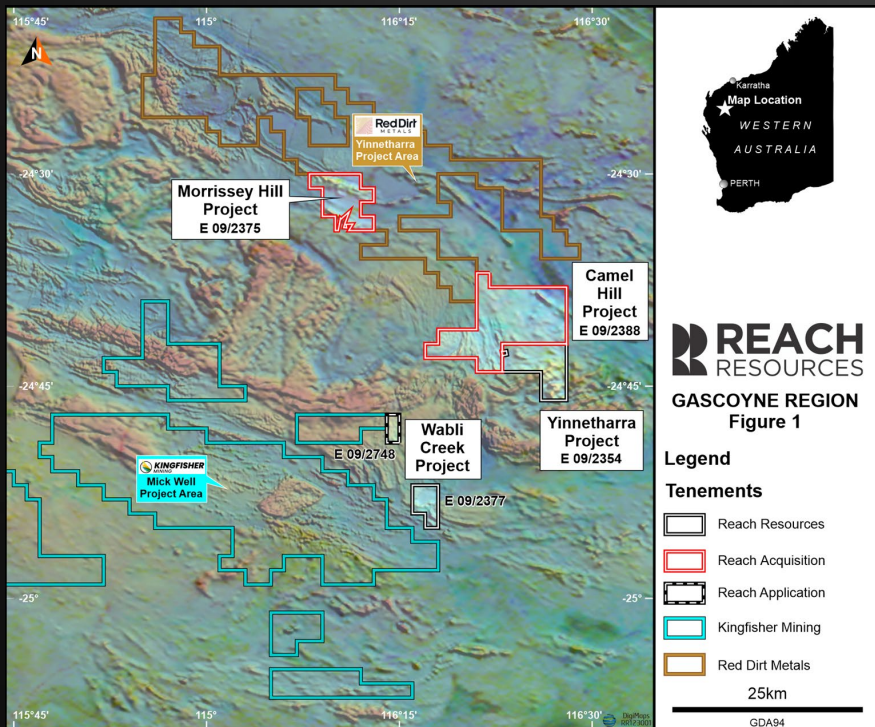


Manganese



ASX:RRI+

Morrissey Hill Lithium



Highlights

- Morrissey Hill (E09/2375) contains historical high-grade lithium, tantalum, rubidium, cesium, niobium results from rock-chip samples including:
1.32% Li₂O, 3.62% Ta₂O₅, 1,936 ppm Rb, 2,276 ppm Cs, and 1.55% Nb₂O₅ ¹
- The Morrissey Hill project adjoins Red Dirt Metals' (ASX:RDT) Yinnetharra Lithium Project. RDT recently announced initial assay results from drill intersections including 55.6 m @ 1.12% Li₂O incl. 15 m @ 1.52% Li₂O from 95 m. ²
- Geology within Morrissey Hill is consistent with Red Dirt Metals' "Goldilocks Zone" theory for occurrence of lithium-cesium-tantalum (LCT) pegmatites. Numerous outcropping pegmatites have already been mapped within E09/2375 at Morrissey Hill
- In addition, results show a 5-km long lithium soil anomaly (>100 ppm Lithium) untested by Drilling.

Notes:

¹ Refer RR1 ASX release 13/02/23 "Highly prospective and strategic lithium, REE & manganese tenements acquired"

² Refer RDT ASX release 20/01/23 "Outstanding assay results from initial Yinnetharra lithium drill hole"

Camel Hill

REE

Highlights

- New tenement E09/2388 (Camel Hill) has historical rock-chip samples with total rare earth oxide (TREO) results of up to 1,357 ppm¹
- A ~3.5-km long REE soil anomaly (>500 ppm REE) untested by drilling.
- Recorded REE anomalies correspond with thorium radiometric highs.
- The new acquisition combined with tenement E09/2377 increases the land holding for this project area to 168 sq km

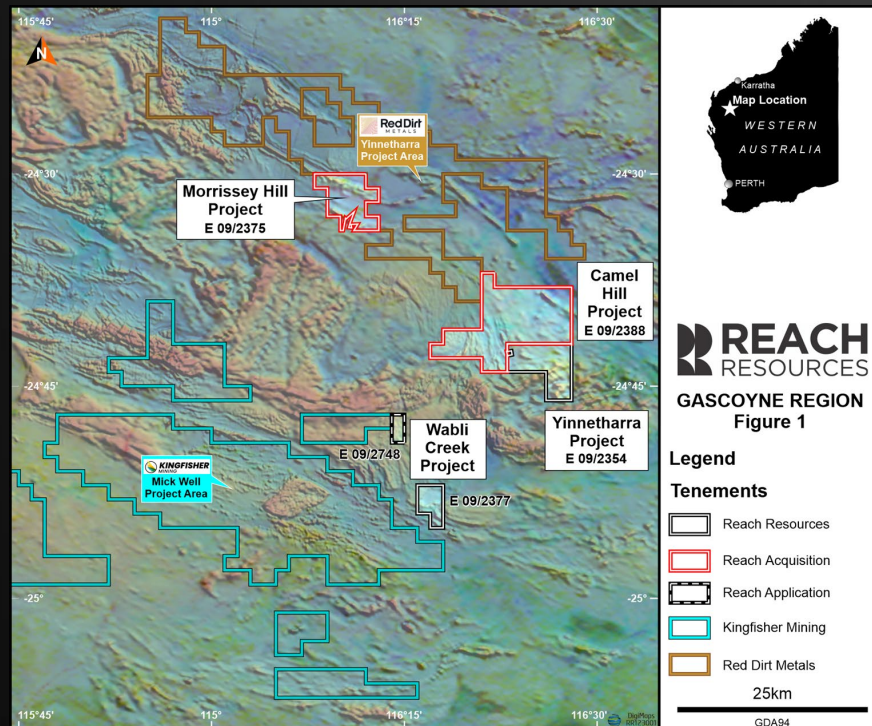
Notes

¹ Refer RR1 ASX release 13/02/23 " Highly prospective and strategic lithium, REE & manganese tenements

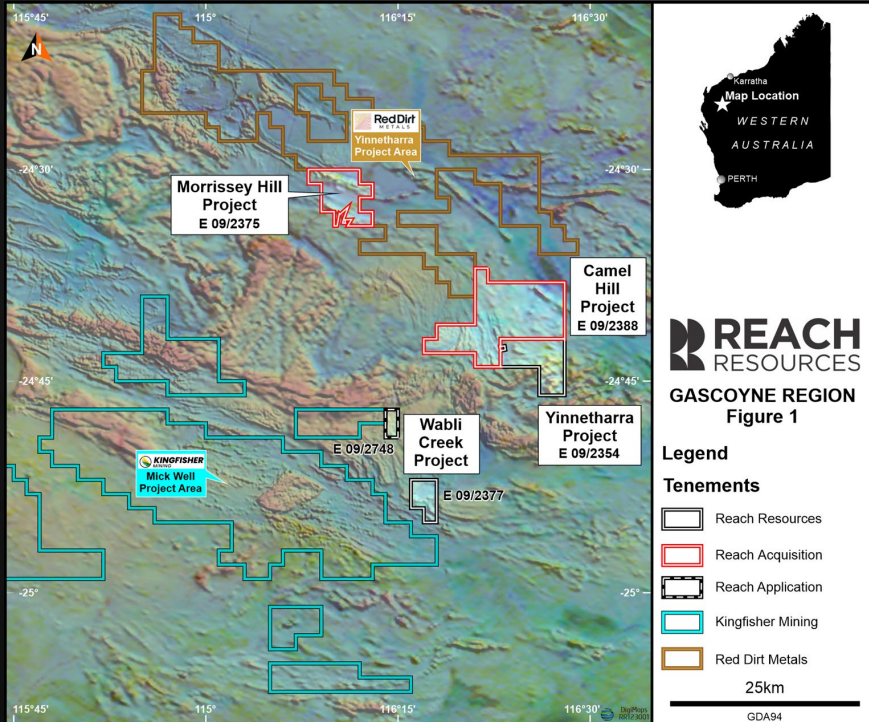
Rare Earths



REACH
RESOURCES

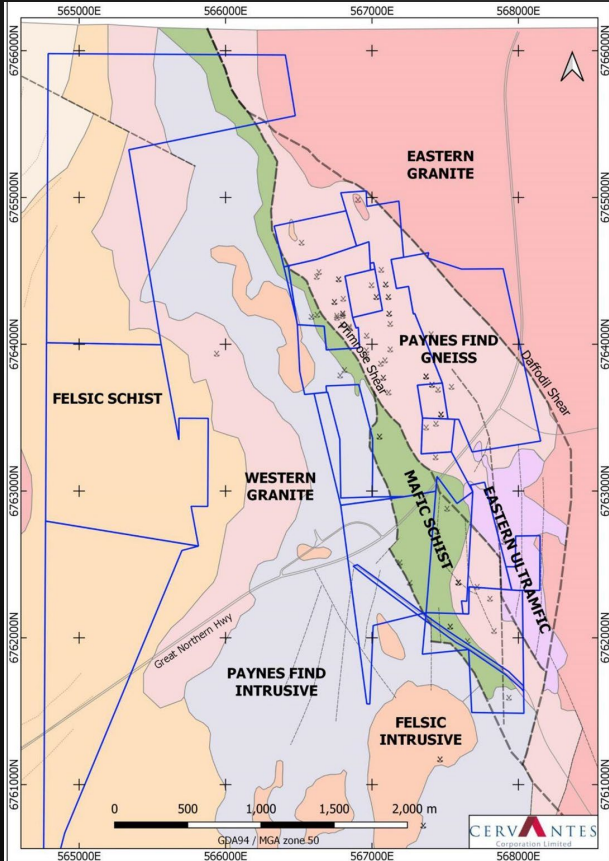


Wabli Creek REE



Highlights

- High-grade assays of **6.78% Niobium oxide**, **3.71% Tantalum oxide**¹ and high grade super critical heavy rare earth oxides (HREO), returned from the Company's Wabli Creek tenement, within the Critical Elements Project
- HREO results²:
 - 7226 ppm Yttrium oxide
 - 3430 ppm Dysprosium oxide
 - 4880 ppm Ytterbium oxide
 - 2760 ppm Erbium oxide
 - 450 ppm Terbium oxide
- The Wabli Creek Niobium and Total Rare Earth Oxides (TREO) target zone has a **potential strike length of up to 1.5km**
- Significantly, all three of the Company's granted tenements have returned highly anomalous TREO results >500ppm to a maximum of 25,652 ppm or 2.57% TREO³



Primrose

Gold

Gold



- Total inferred mineral resources
~ 1.035Mt @ 3.2g/t Au for 105,000 oz Au ¹
- Includes higher grade components
0.582Mt @ 4.7g/t Au for 87,000 oz Au ²
- Significant upside to resource open at depth & along strike
- Potential for lithium bearing minerals within pegmatites identified on site.

Notes

¹ ² Refer RR1 ASX release 06/12/21 " Maiden inferred resource Blue Heaven prospect Primrose Gold project"

Next Steps

Gascoyne Exploration



	March	April	May	June	July	August	September	October	November	December
Rock chip and stream sediment sampling										
Detailed mapping										
Geochemistry										
Drilling										



ASXRR1+