

DISCOVERY FOCUSED MINERALS EXPLORER



Christmas has come early

Leveraging a global major's push into (and exit from) a frontier location

RESOURCE RISING STARS - INVESTOR PRESENTATION

14 & 16 NOVEMBER 2023

ASXTKM 

What drives exploration success?

The right mix of the right people and the right projects.

ACCESS



Access to a strong pipeline of projects and capital

Trek has a proven track record of gaining access to highly prospective projects, targeting the right commodities, with scale and in the right jurisdictions.

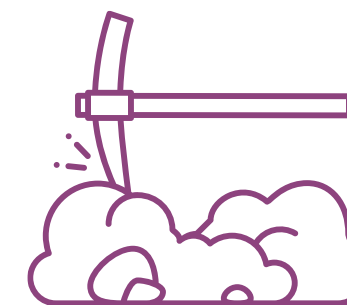
ABILITY



Board, Management and Staff with the right skills and proven capabilities

Trek's Board is well known for its ability to source funding and opportunities. Trek's Management and staff are highly skilled with the relevant experience to deliver.
Cash in the bank to drive action.

ACTION



Action-orientated

Trek is obsessed with action. We know that getting out on the ground and drill testing intelligently sourced targets is the key to delivering shareholder returns.



Access

Diversified portfolio primed for exploration success



ACCESS ABILITY ACTION

Diversified and scalable project portfolio with the right commodities in the right jurisdictions

Christmas Creek

Gold (Au) & Rare Earths

McEwen Hills

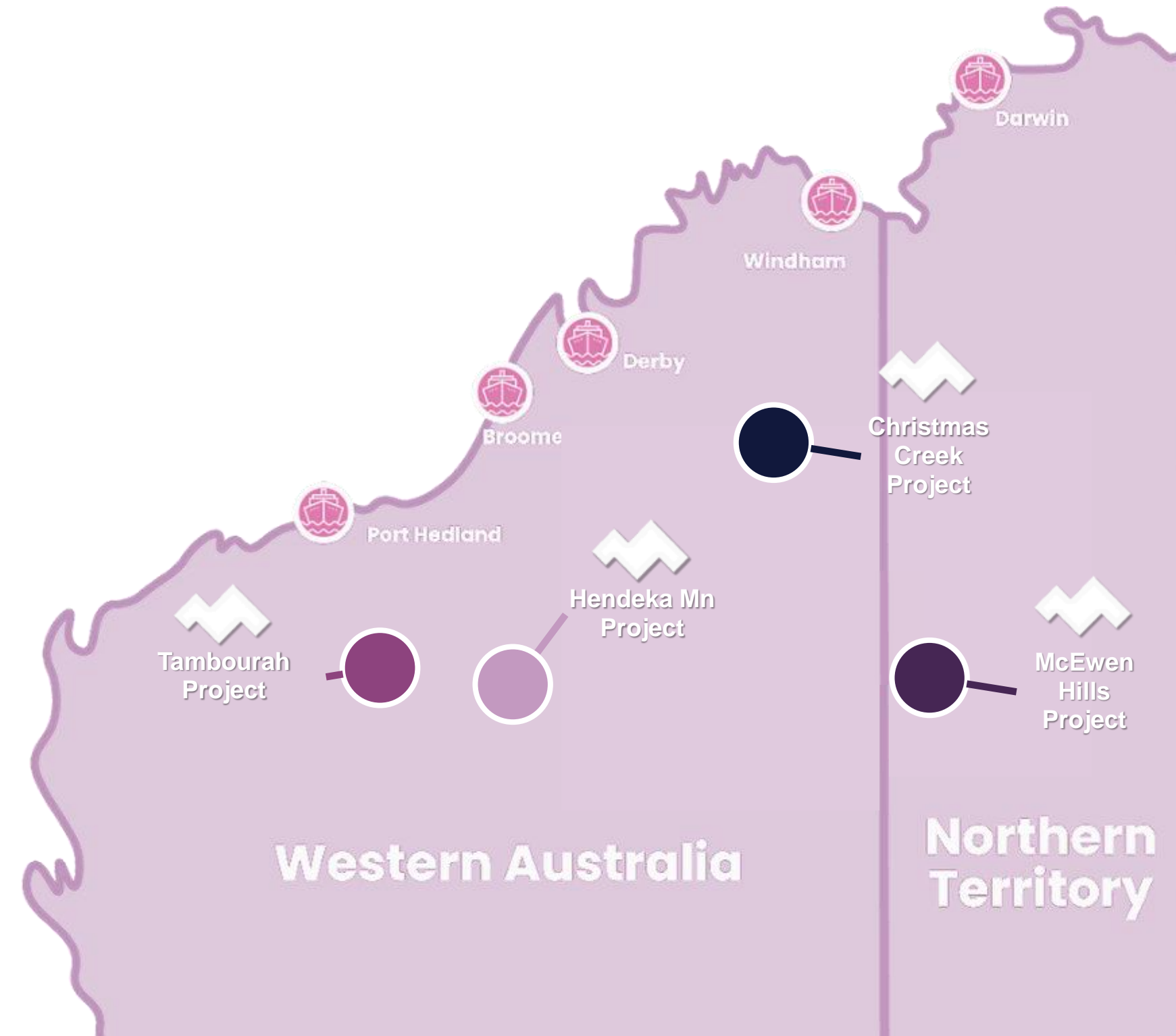
Niobium (Nb)

Hendeka

Manganese (Mn)

Tambourah

Lithium, Caesium & Tantalum (Li-Cs-Ta)



Christmas Creek

A rare opportunity to leverage off the world's largest gold mining company

Access

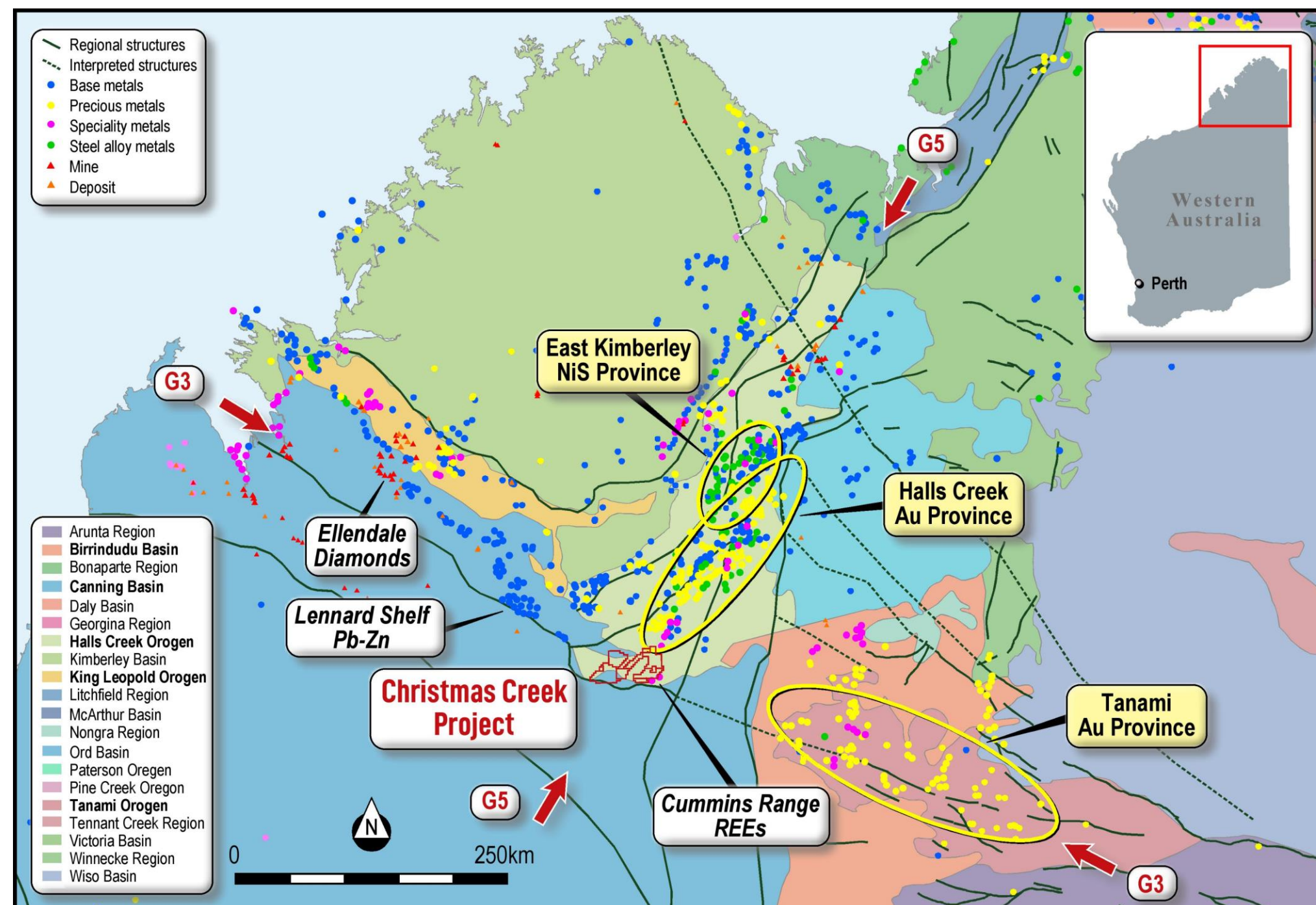
- Western Australia, a pro-mining jurisdiction
- Well located on pastoral leases adjacent to the Tanami Rd & Great Northern Highway
- Heritage agreements cover the entire tenement package

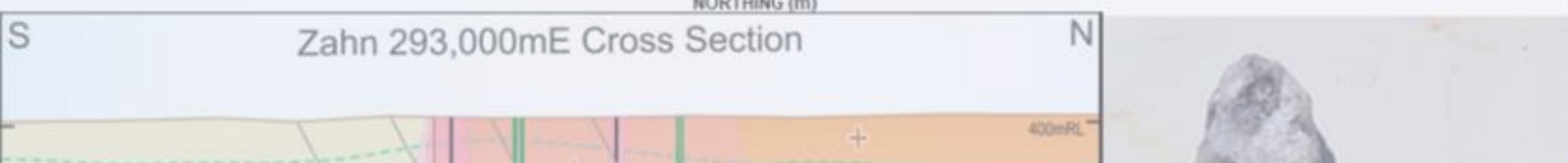
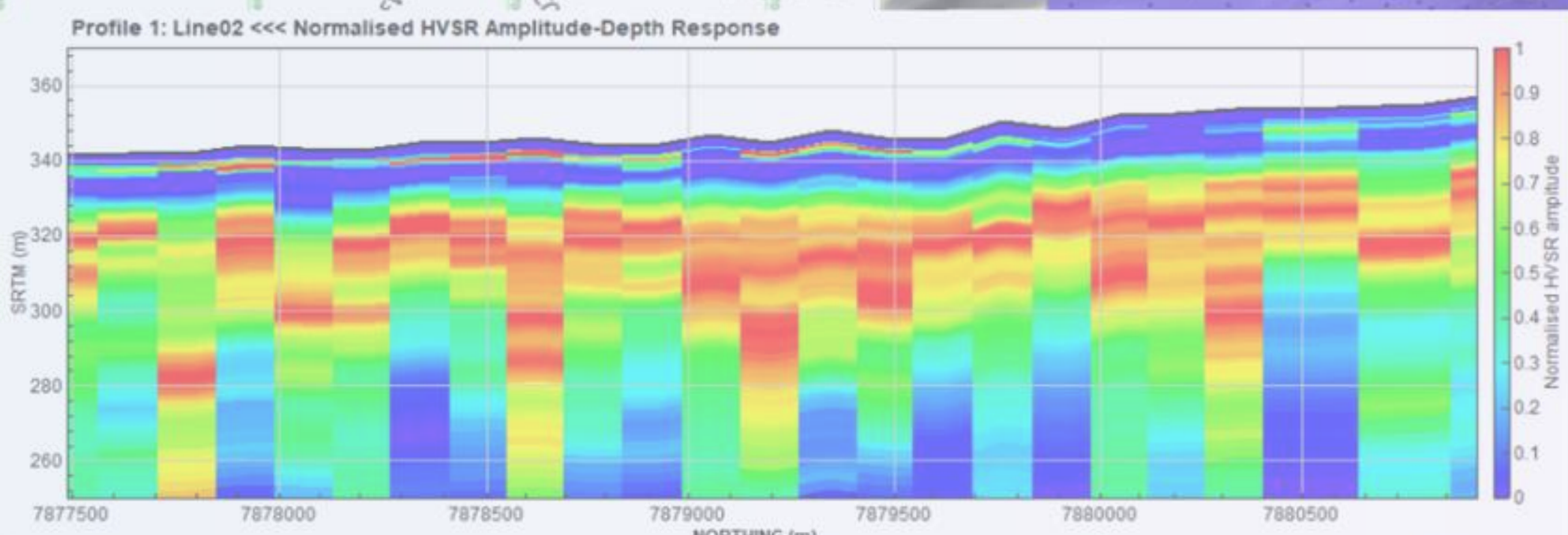
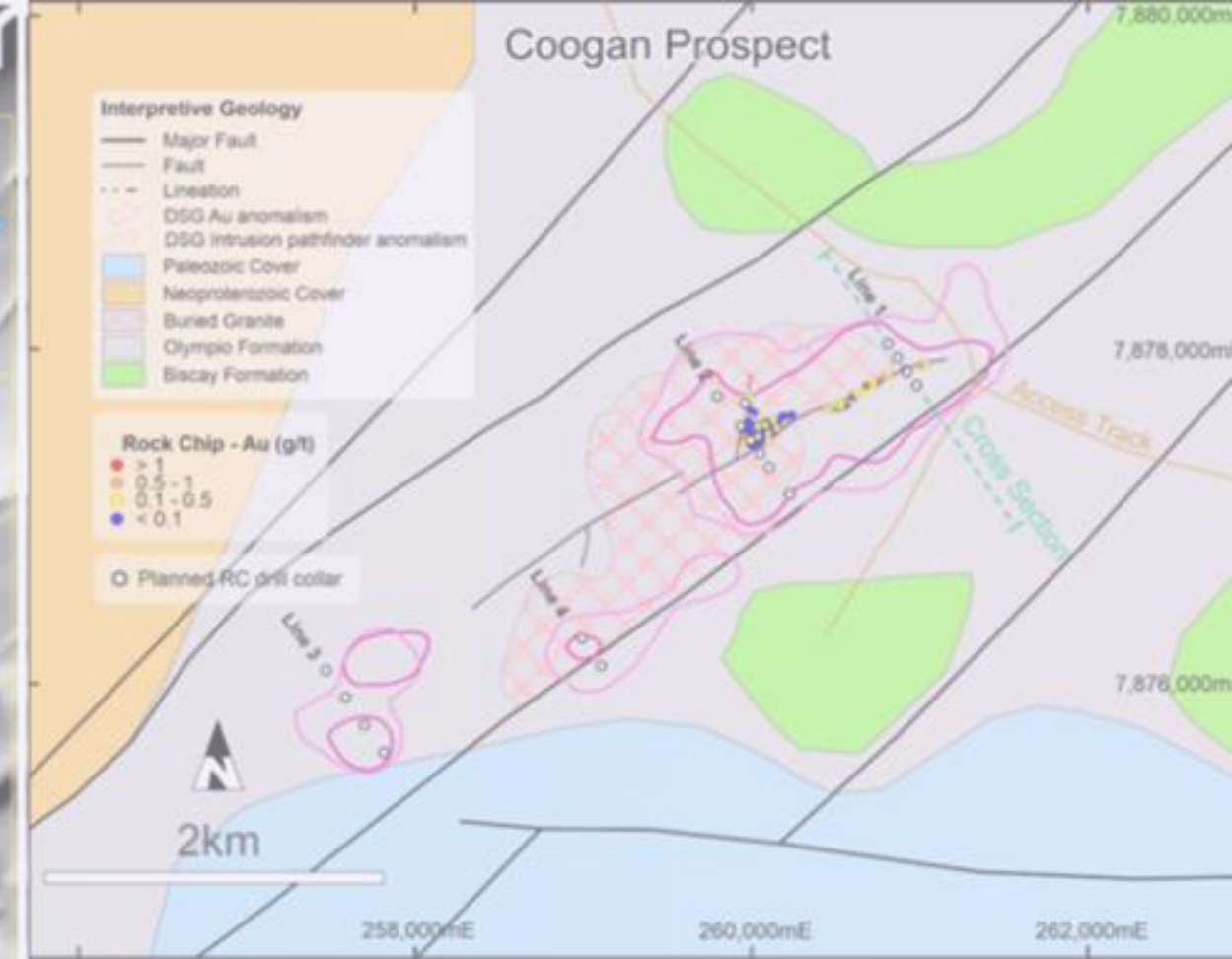
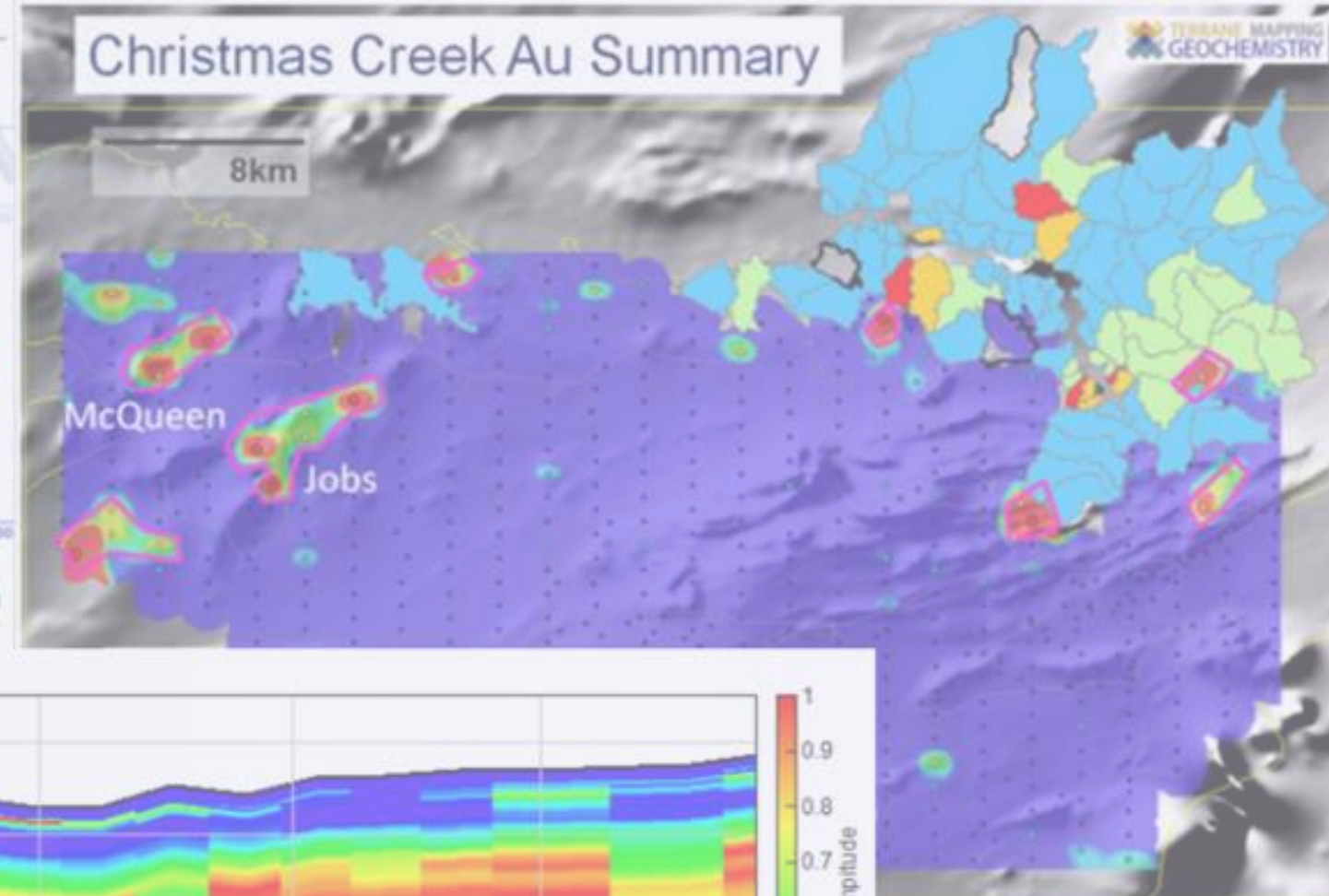
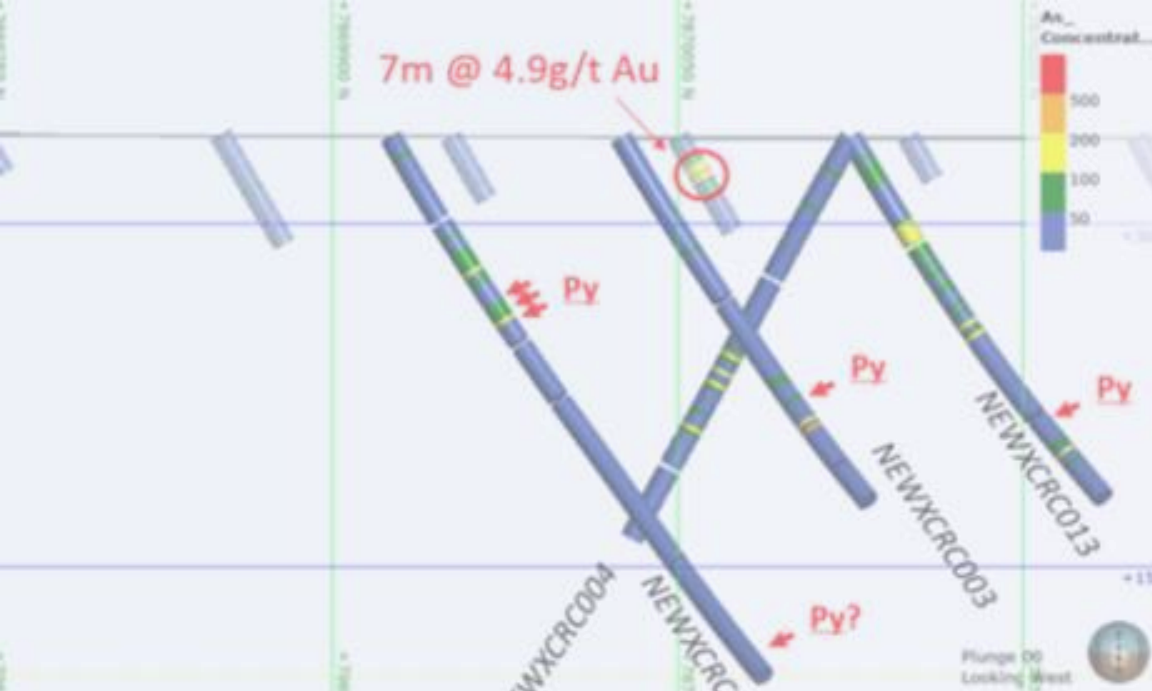
Scale

- Interpreted extension of the Granites-Tanami Orogen (NT)
- World class Tanami Au Mine along strike
- Extensive 1,183 km² tenement package

Opportunity

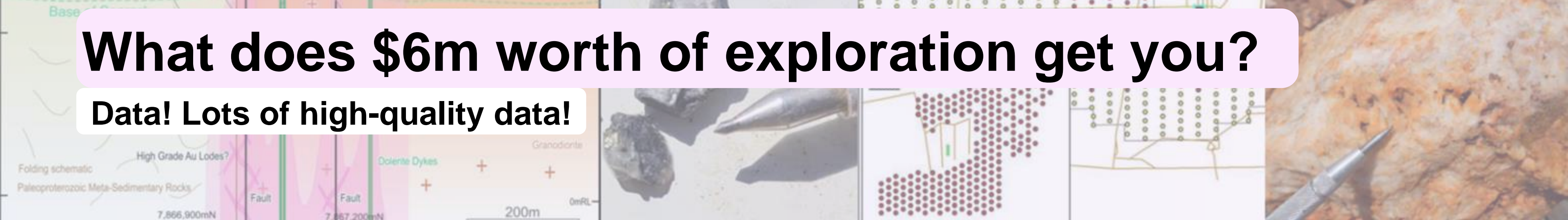
- Lack of historic exploration due to shallow cover
- \$6 million worth of recent exploration
- Potential for other commodities; e.g., REE, Ni-Cu-PGE, Li





What does \$6m worth of exploration get you?

Data! Lots of high-quality data!



Christmas Creek

Newmont generated multiple targets utilizing “Deep Sensing Geochemistry” aka DSG soils

Shallow Cover

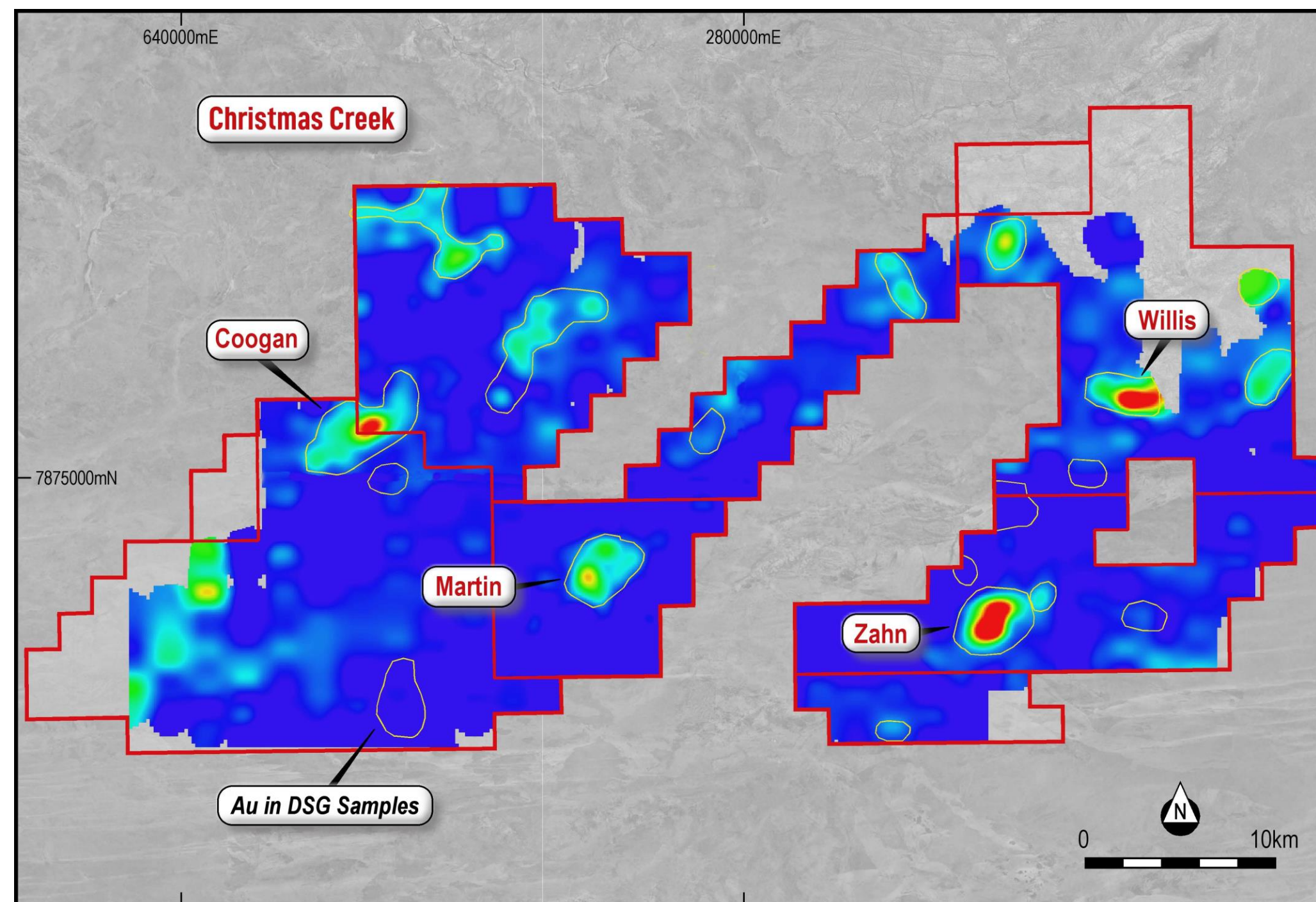
- Lack of outcrop = low historic exploration
- Low-level geochemistry allows detection through transported cover
- Flat = ease of access

High Quality Data

- High resolution magnetic & radiometric
- Industry leading surface geochemistry
- Regolith interpretation

Targets Identified

- Coogan
- Willis
- Martin
- Zahn



Christmas Creek

Multiple gold-bearing structures proven in drilling

Drill Tested Targets

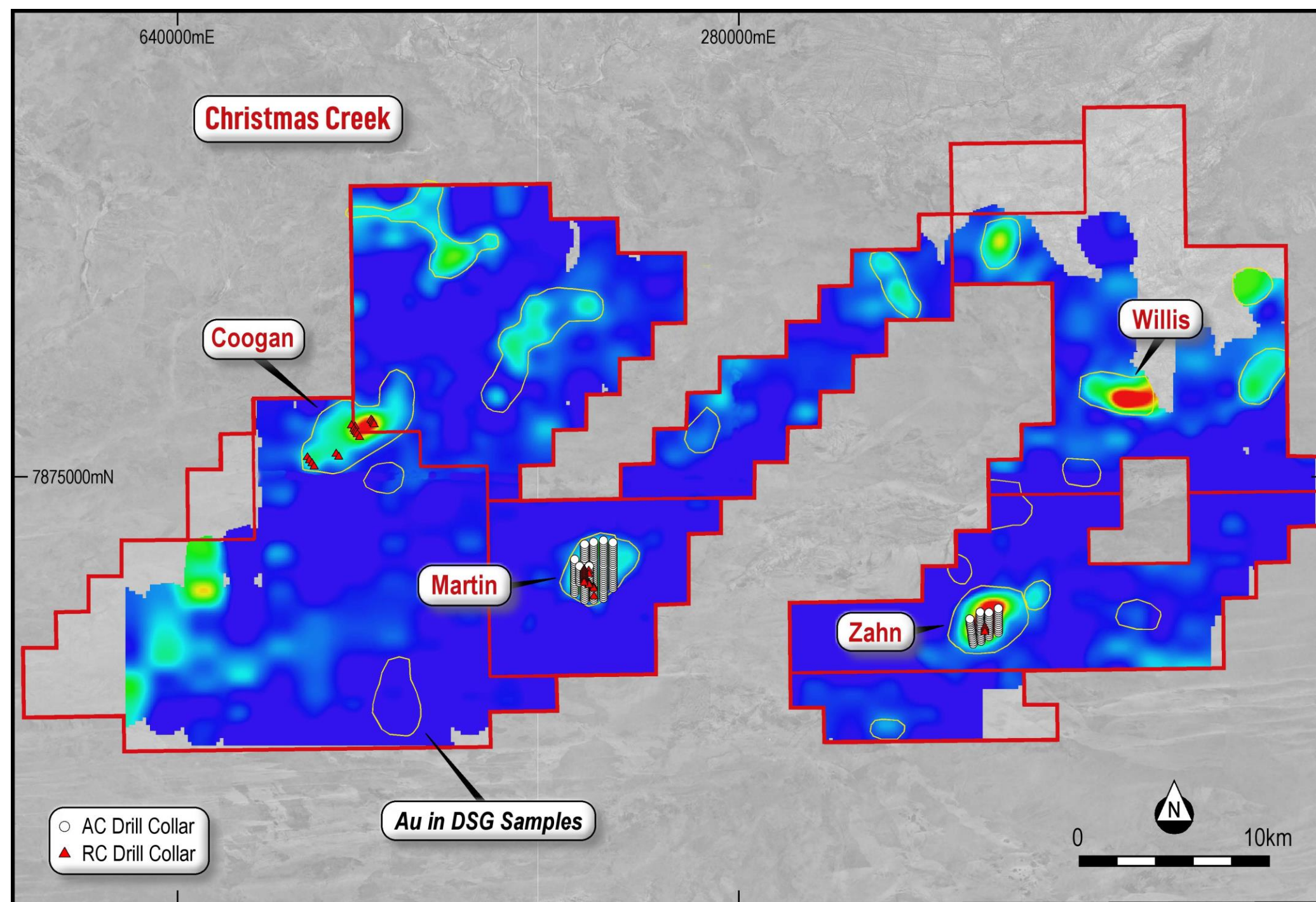
- Coogan
- Martin
- Zahn

Bedrock Mineralisation

- Orogenic gold
- Intrusion related gold
- Base metals

Unconstrained

- Willis yet to be drill tested
- Mineralisation at other targets remain unconstrained
- Wide spaced soil requires infill prior to elevation to drill target status



Christmas Creek

Multiple gold-bearing structures proven in drilling

High-Grade Intercepts

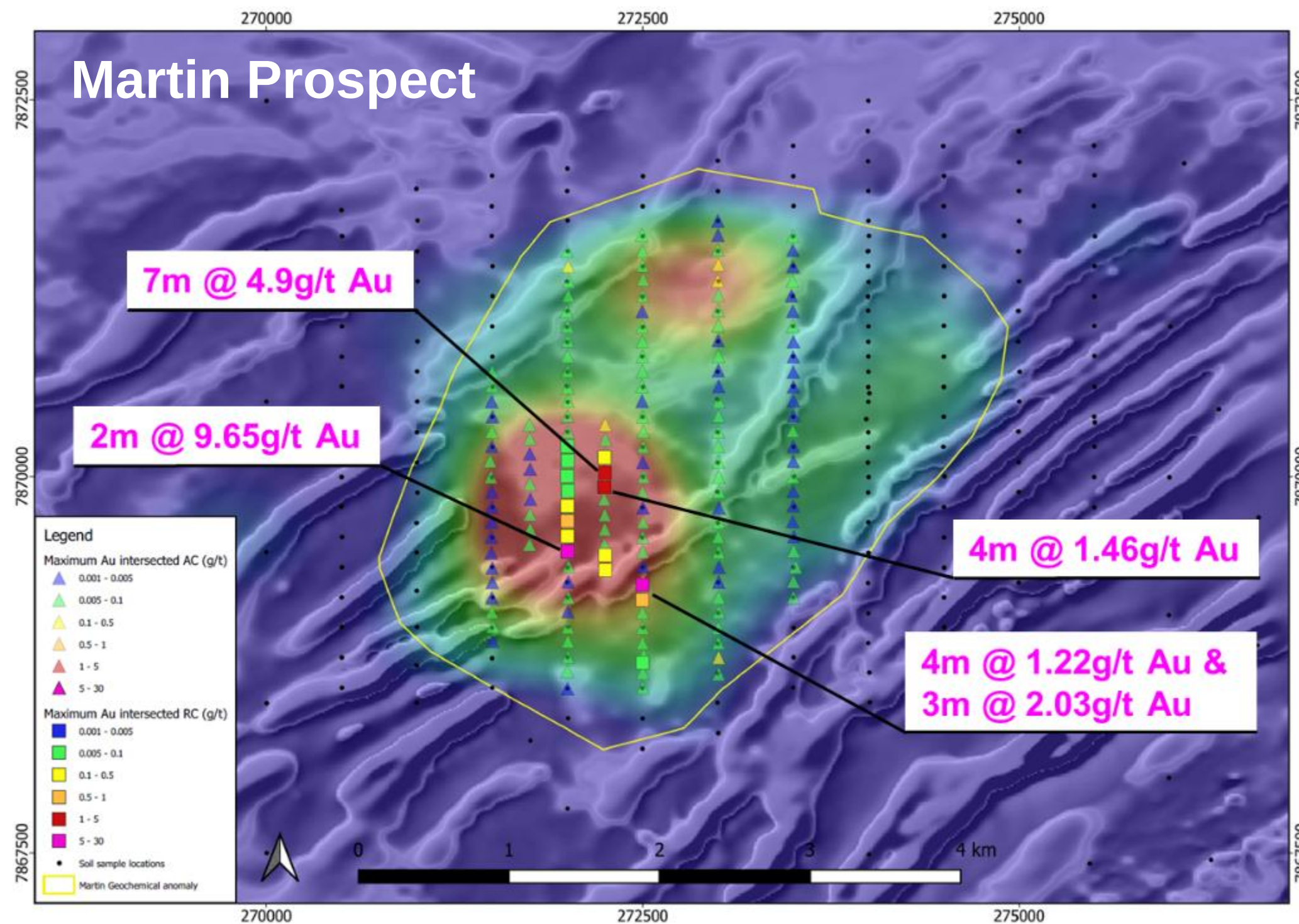
- **7m @ 4.9g/t Au**
- **2m @ 9.65g/t Au**
- 4m @ 1.46g/t Au
- 4m @ 1.22g/t Au &
- 3m @ 2.03g/t Au

Large Footprint

- 3 x 4 km
- First pass air core @ 250-500m lines
- Anomalous AC remains untested

Minimal RC Drilling

- Only 3 drill lines (testing 500m of strike)
- Only one complete line @ 100m along line
- Best intercepts remain open



Christmas Creek

Multi-commodity opportunity

Rare Earths

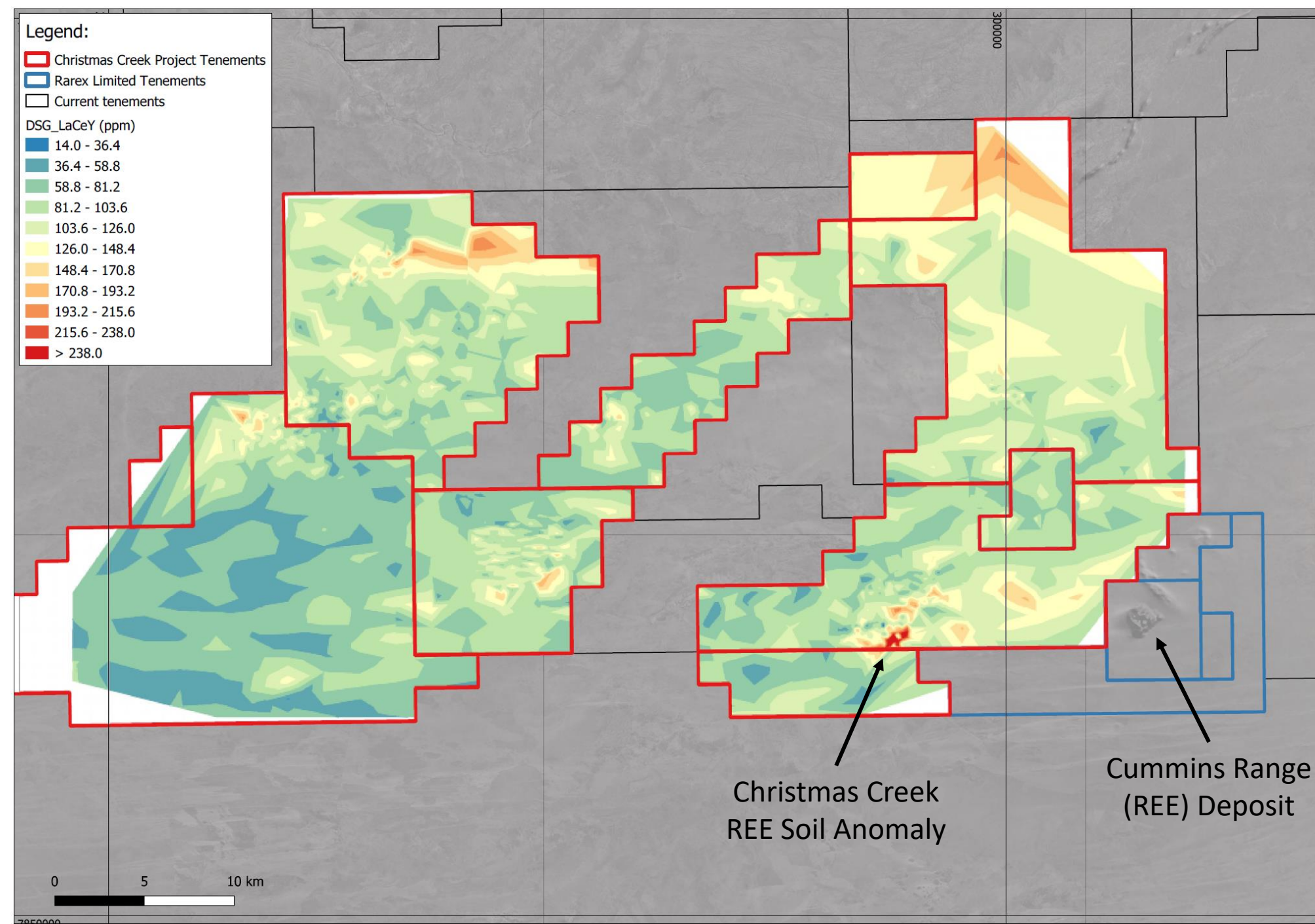
- Cummins Range REE Deposit located 2km east of Project
- REE potential identified in soil data
- Anomalous radiometrics

Nickel-Copper-PGE

- Two known Deposits (Savannah/Sally Malay & Panton Sill)
- IGO undertaking extensive exploration in the Halls Creek Orogen
- Recent IGO/BUX Ni-Cu discovery in King Leopold Orogen

Lithium Pegmatites

- Lithium bearing pegmatites located approx. 16km to the NE
- Pegmatites logged in gold focused drilling
- Pegmatites observed in field



McEwen Hills

Future-focused strategic holding

Access

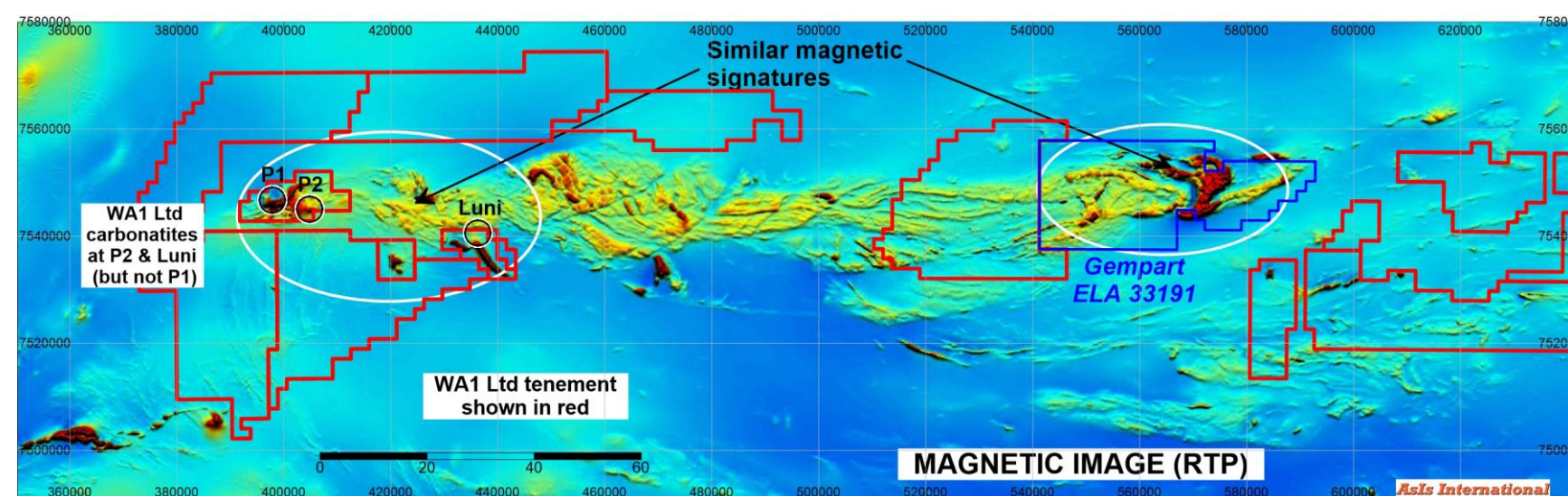
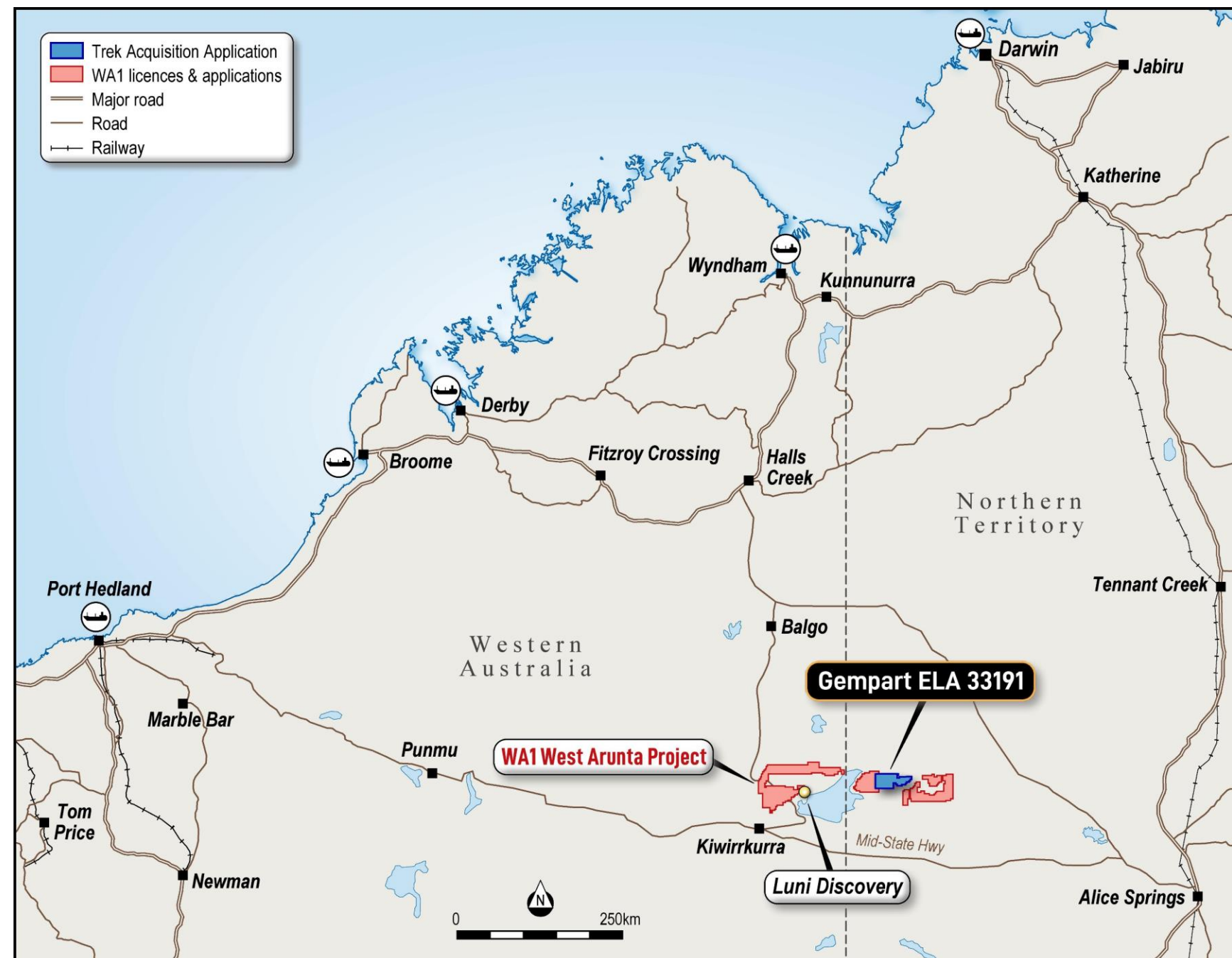
- West Arunta Critical Minerals Province
- Tenement application ELA 33191
- Northern Territory incentivising exploration activities in the area

Scale

- WA1 Luni Nb Discovery potentially world class in terms of size and grade
- Significant 795 km² land holding
- Sits along large magnetic orogenic belt

Opportunity

- Acute lack of historic exploration due to remote location
- New province with multiple carbonatites discovered
- Prospectivity for other deposits (e.g., Cu-Au)





McEwen Hills

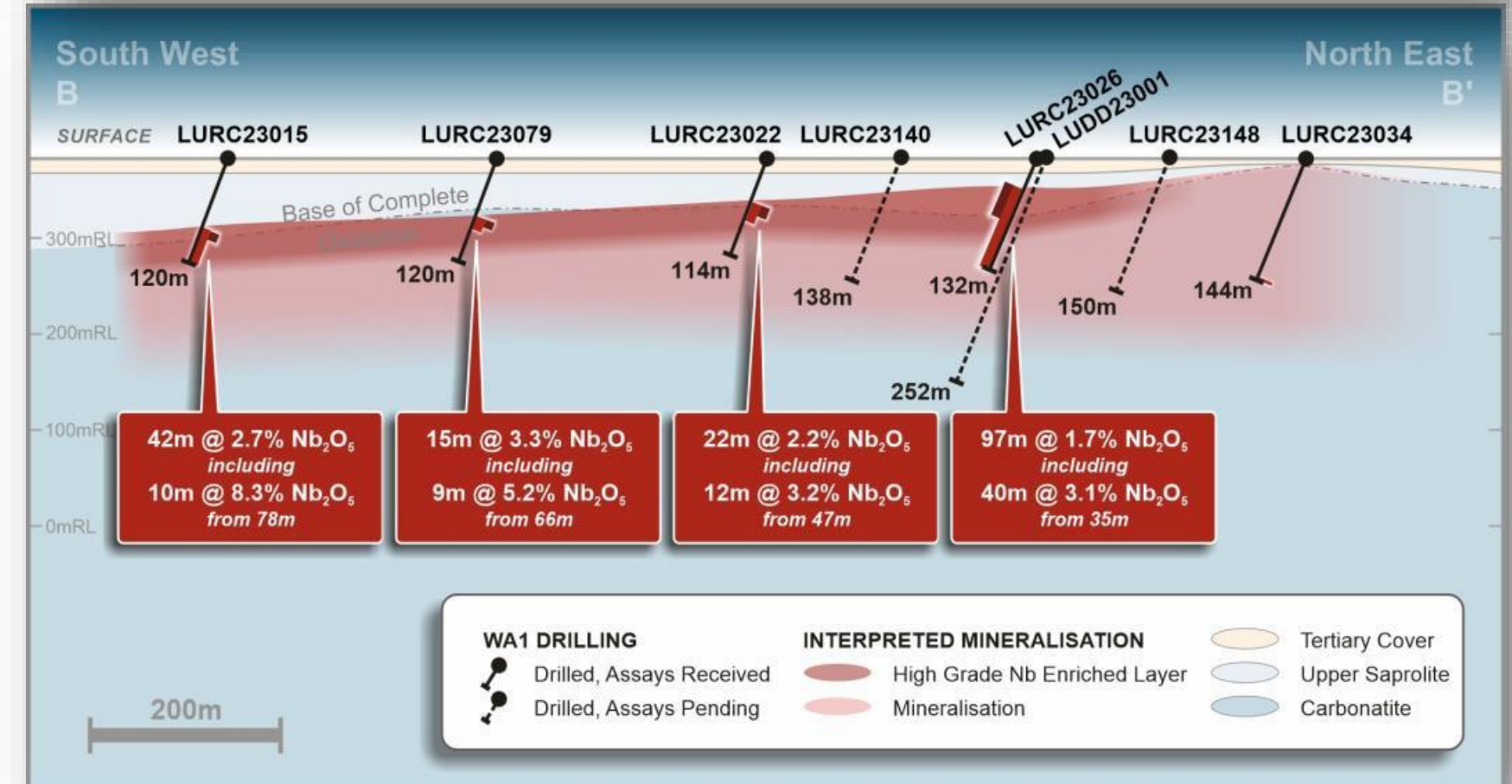
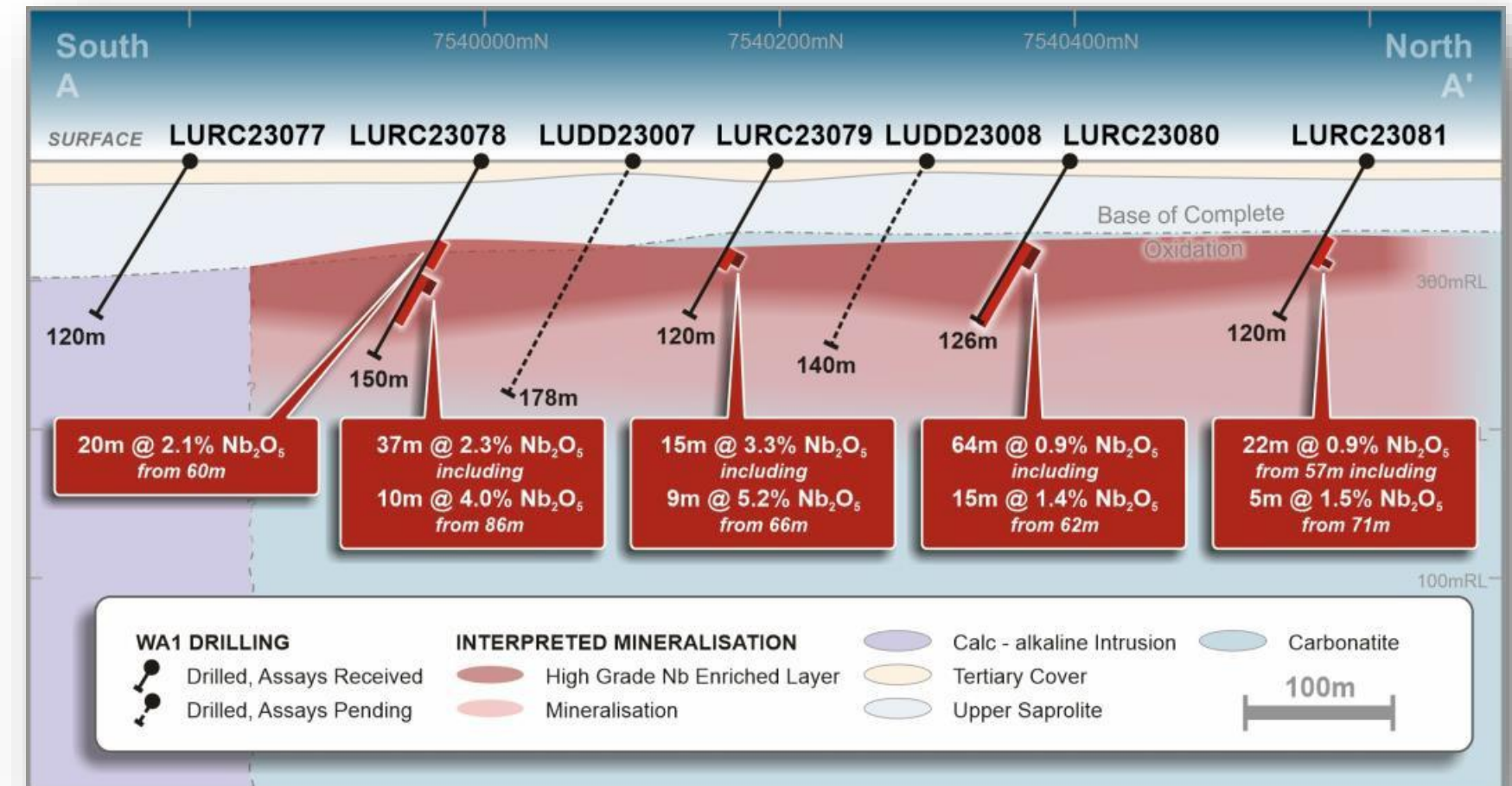
Proven scale along strike

WA1 greenfields discovery under shallow cover

Sustained market cap **>AUD\$200M** since discovery (**now >AUD\$400M**)

Deposit footprint **>1 x 1km**

Majority of **high-grade** material forms a sub-horizontal blanket from ~50m depth



Top - Simplified cross-section looking west; Bottom - Simplified cross-section looking north-west

Source: WA1 ASX Announcement: Canaccord Genuity Latam Conference Presentation 27/09/2023

Hendeka

A Pilbara battery metal asset with a huge upside

Access

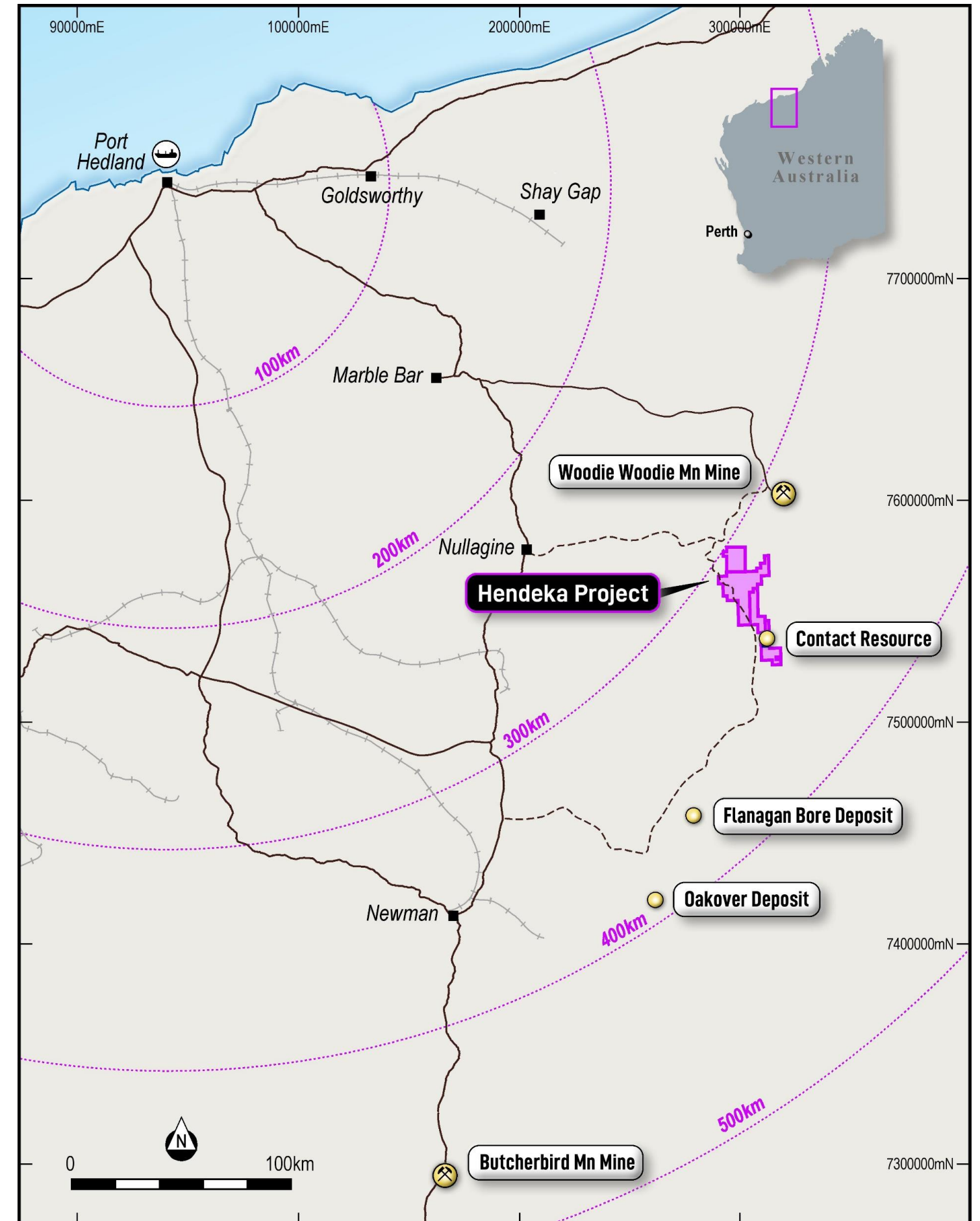
- Pilbara region of Western Australia
- Infrastructure rich global mining centre
- Historic haul road to Woodie Woodie

Scale

- Large 546 km² of tenure
- Proximal to prolific Woodie Woodie Manganese (Mn) Mine
- Hydrothermal Mn – can host very high grades

Opportunity

- Two existing Manganese Resources
- Advanced & on-going metallurgy
- Isolated open drill intercepts & geophysical exploration targets



Hendeka

A Pilbara battery metal asset with a huge upside

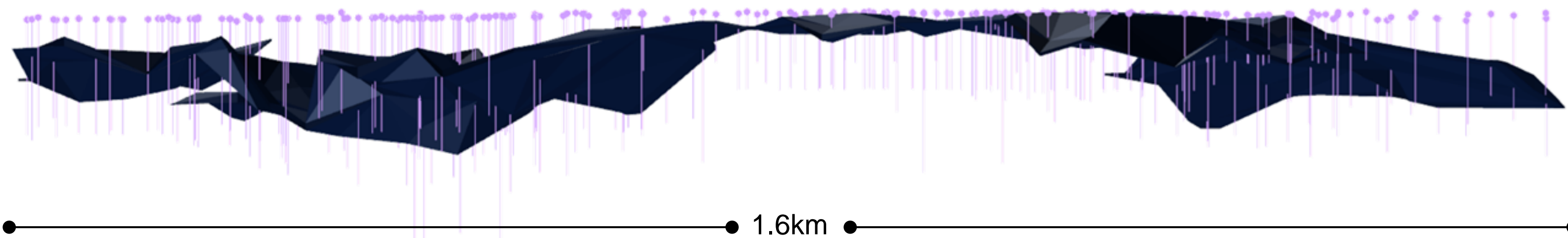
Inferred Resource **11Mt @ 15% Mn**

Upgradeable through beneficiation and potential to produce **HPMSM** for the lithium-ion battery market

Exploration upside across 546 km² of tenure

	Mt	Mn%	Al ₂ O ₃ %	Fe%	SiO ₂ %	P%	LOI(1000)
Contact	2.8	13.6	5.1	15.7	42.9	0.054	8.4
Contact North	8.5	15.4	3.0	15.0	42.4	0.057	8.6
Combined	11.3	15.0	3.5	15.2	42.5	0.057	8.5

Table 1: JORC Inferred Resource utilising a 10.1% Mn cut-off



Tambourah

Large tenement holding with a significant LCT pegmatite system

Access

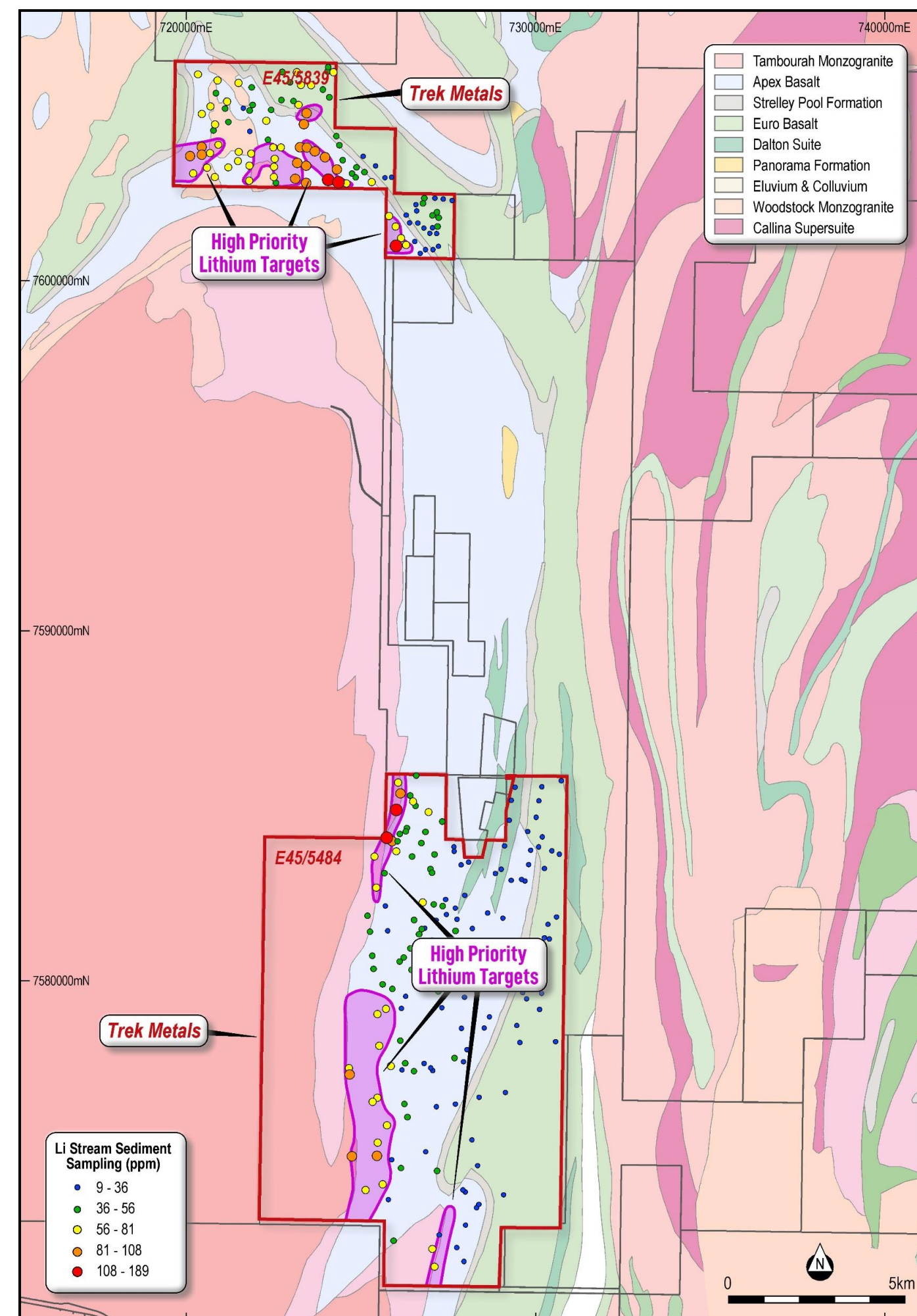
- Pilbara region of Western Australia
- Infrastructure rich global mining powerhouse
- Numerous world class Lithium deposits in region

Scale

- Lions share of the West Shaw Greenstone Belt
- Large 129 km² of tenure
- Significant outcropping pegmatite field

Opportunity

- High-grade surface samples identified
- No historic drilling (maiden drilling at wide spacing recently completed)
- Large areas remain untested



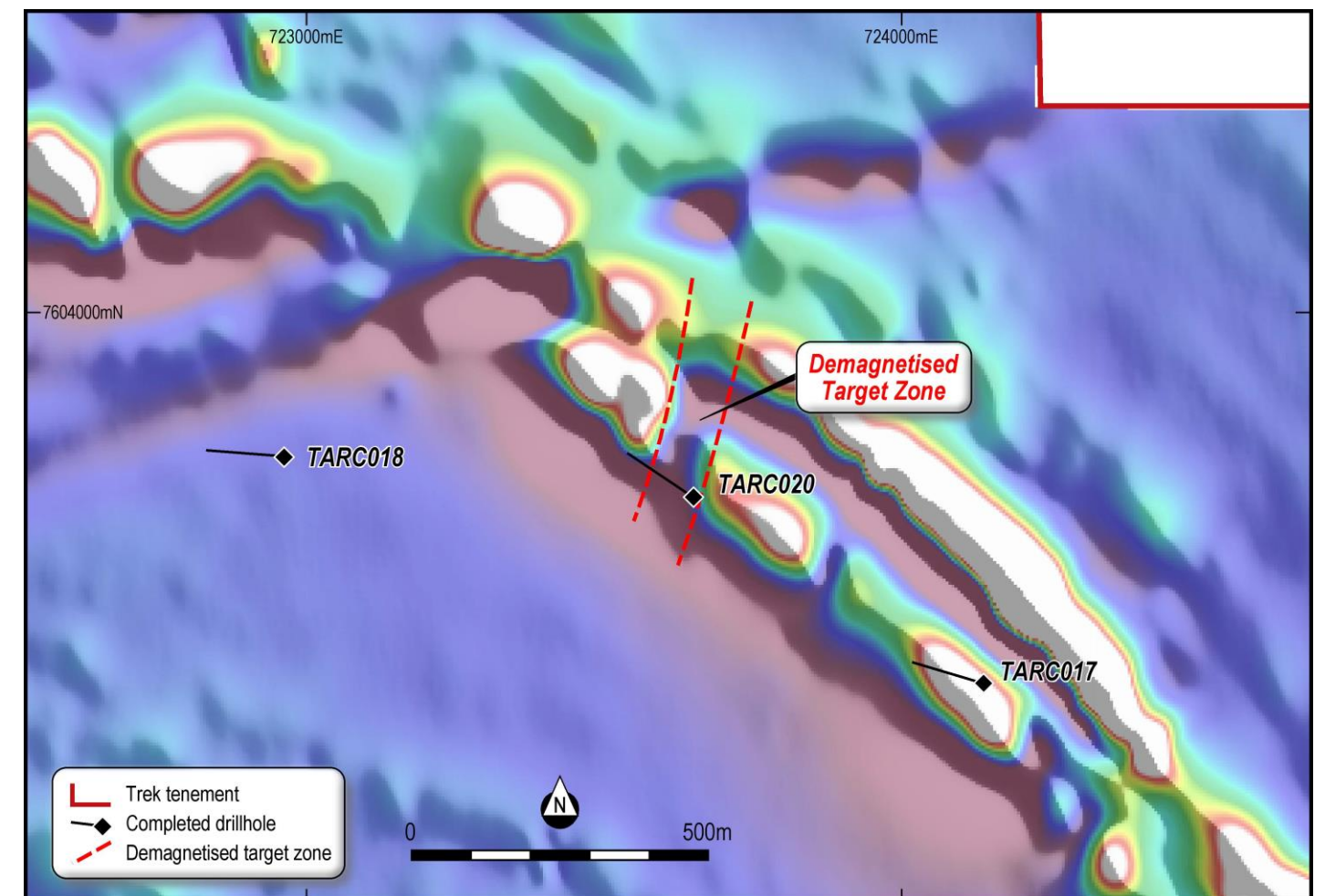
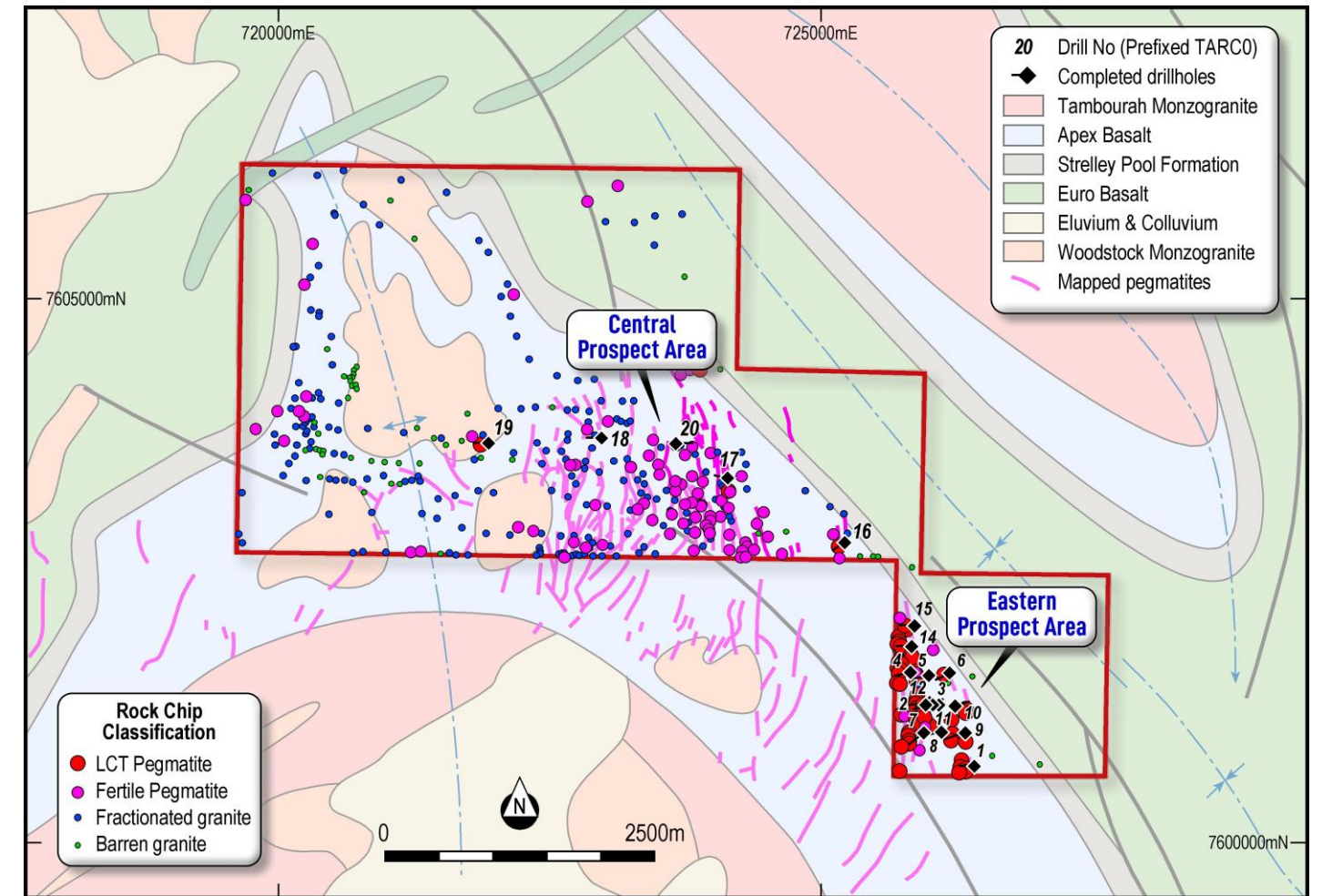
Tambourah

Large tenement holding with a significant LCT pegmatite system

Maiden drilling warranted but results disappointed

Additional analysis in progress

Structural (demagnetized) target zones of interest moving forward





Action

Nimble, action-orientated, discovery focused.



ACTION ACCESS ABILITY



2023

2024

Tambourah (Li)

- Target generation & heritage surveying
- Maiden drill program

Hendeka (Mn)

- VTEM survey to aid in generation of regional exploration targets
- Concentrate metallurgy test work proved grade and recovery
- High purity sulphate metallurgy test work (*in progress*)

Two great opportunities secured

Christmas Creek (Au & REE)

- Project secured
- Data review, target generation & field planning
- Key stakeholder engagement (*in progress*)

- Geochemical orientation survey (*planned*)

McEwen Hills (Nb)

- Project secured

Christmas Creek (Au & REE)

- First pass & extensional drilling at known targets
- Extend & infill soil sampling of unconstrained targets
- Target additional minerals of interest (e.g., REE & Ni-Cu)

McEwen Hills (Nb)

- Key stakeholder engagement & access agreement
- Target generation via geophysical surveys
- Heritage surveying

Hendeka (Mn)

- Regional drill target testing
- Assess critical mass & undertake Resource drilling if warranted
- Additional metallurgy & kick off studies if warranted

Tambourah (Li)

- Heritage surveying
- Drill test structural targets



Ability

The right people, in the right roles, doing the right thing.



ABILITY ACCESS ACTION

Strong Board and balance sheet

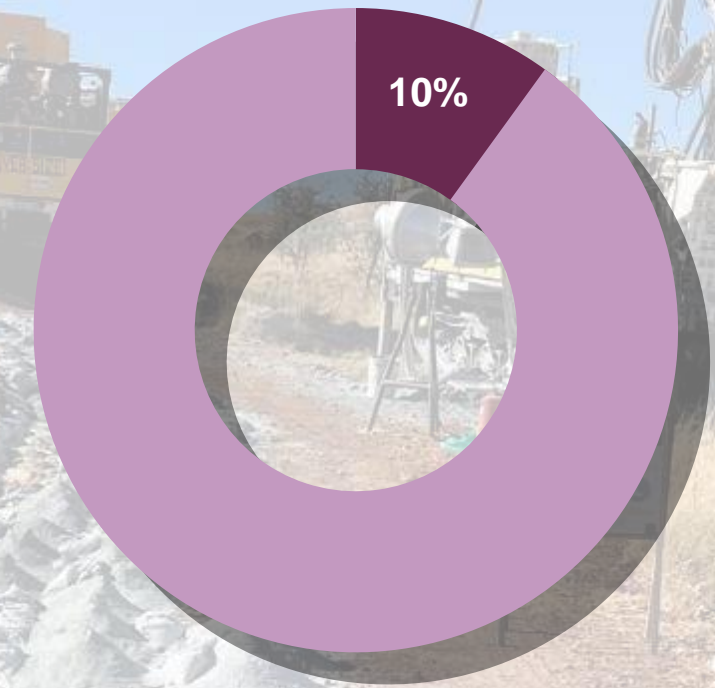
Capital Structure

ASX Code	TKM.ASX
Share Price (31 st October 2023)	\$0.05
Shares on issue	497.6m
Market Cap.	\$24.8m
Cash and cash equivalents (30 th September 2023)	\$7.2m
Enterprise Value	\$17.6m

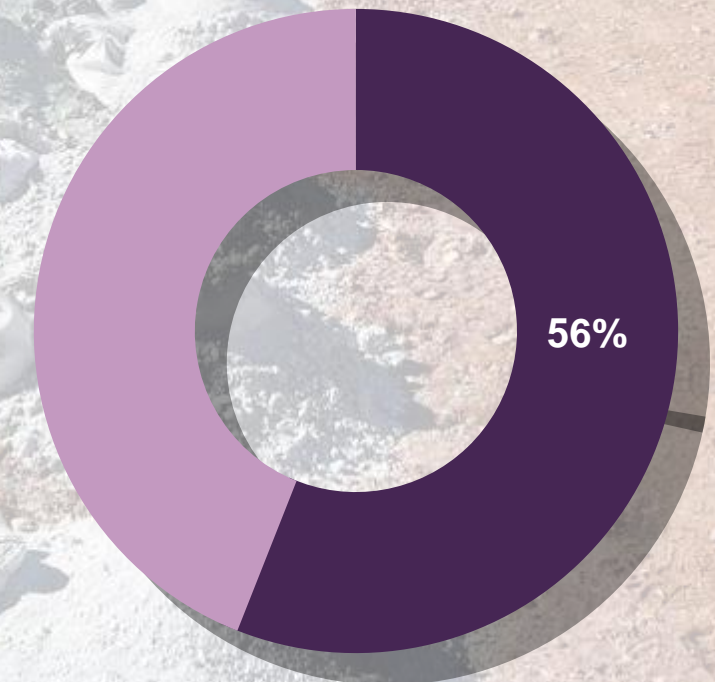
Board of Directors

Tony Leibowitz	Non-Executive Chairman
Neil Biddle	Non-Executive Director
John Young	Non-Executive Director
Valerie Hodgins	Non-Executive Director

Board & Management



Top 100 Holders





Thank you

For more information, please reach out

Derek Marshall
Chief Executive Officer
dmarshall@trekmetals.com.au



Disclaimer

This presentation prepared by Trek Metals Limited (“Company”) does not purport to contain all the information that a prospective investor may require in connection with any potential investment in the Company. You should not treat the contents of this presentation, or any information provided in connection with it, as financial advice, financial product advice or advice relating to legal, taxation or investment matters. No representation or warranty, express or implied, is made as to the fairness, accuracy, completeness or correctness of the information, opinions and conclusions contained in this presentation. This presentation is provided expressly on the basis that you will carry out your own independent inquiries into the matters contained in the presentation and make your own independent decisions about the affairs, financial position or prospects of the Company. The Company reserves the right to update, amend or supplement the information at any time in its absolute discretion (without incurring any obligation to do so). To the maximum extent permitted by law, none of the Company its directors, employees or agents, advisers, nor any other person accepts any liability, including, without limitation, any liability arising from fault or negligence on the part of any of them or any other person, for any loss arising from the use of this presentation or its contents or otherwise arising in connection with it. This presentation is not an offer, invitation, solicitation or other recommendation with respect to the subscription for, purchase or sale of any security, and neither this presentation nor anything in it shall form the basis of any contract or commitment whatsoever.

Forward Looking Statements

This presentation may contain forward looking statements that are subject to risk factors associated with mineral exploration, mining and production businesses. It is believed that the expectations reflected in these statements are reasonable but they may be affected by a variety of variables and changes in underlying assumptions which could cause actual results or trends to differ materially, including but not limited to price fluctuations, actual demand, currency fluctuations, drilling and production results, reserve estimations, loss of market, industry competition, environmental risks, physical risks, legislative, fiscal and regulatory changes, economic and financial market conditions in various countries and regions, political risks, project delay or advancement, approvals and cost estimates. This presentation also contains reference to certain intentions, expectations, future plans, strategy and prospects of the Company. Those intentions, expectations, future plans, strategy and prospects may or may not be achieved. They are based on certain assumptions, which may not be met or on which views may differ and may be affected by known and unknown risks. In particular, there is a risk that the Company will not be able to expand or upgrade its existing JORC resource. The performance and operations of the Company may be influenced by a number of factors, many of which are outside the control of the Company. No representation or warranty, express or implied, is made by the Company, or any of its directors, officers, employees, advisers or agents that any intentions, expectations or plans will be achieved either totally or partially or that any particular rate of return will be achieved. Given the risks and uncertainties that may cause the Company’s actual future results, performance or achievements to be materially different from those expected, planned or intended, recipients should not place undue reliance on these intentions, expectations, future plans, strategy and prospects. The Company does not warrant or represent that the actual results, performance or achievements will be as expected, planned or intended. These forward-looking statements are expressed in good faith and believed to have a reasonable basis. These statements reflect current expectations, intentions or strategies regarding the future and assumptions based on currently available information. Should one or more risks or uncertainties materialise, or should underlying assumptions prove incorrect, actual results may vary from the expectations, intentions and strategies described in this announcement. The forward-looking statements are made as at the date of this announcement and the Company disclaims any intent or obligation to update publicly such forward looking statements, whether as the result of new information, future events or results or otherwise.

Competent Person’s Statement - Exploration Results

The information in this announcement relating to Exploration Results is based on information compiled by the Company’s Chief Executive Officer, Mr Derek Marshall, a competent person, who is a Member of the Australian Institute of Geoscientists. Mr Marshall has sufficient experience relevant to the style of mineralisation and to the type of activity described to qualify as a competent person as defined in the 2012 Edition of the “Australasian Code for Reporting of Exploration Results, Mineral Resources and Ore Reserves.” The Company confirms that it is not aware of any new information or data that materially affects the information included in the original market announcement. Mr Marshall consents to the inclusion in this announcement of the matters based on his information in the form and content in which it appears.

Competent Person Statement – Mineral Resources

The information in relation to Mineral resources is extracted from the report entitled “Trek accelerates battery metals strategy with acquisition of advanced WA manganese project via scheme of arrangement with Edge Minerals Limited” dated 6 June 2022 and is available to view on www.asx.com.au (Search ASX:TKM). The company confirms that it is not aware of any new information or data that materially affects the information included in the original market announcement and, in the case of estimates of Mineral Resources, that all material assumptions and technical parameters underpinning the estimates in the 6 June 2022 market announcement continue to apply and have not materially changed. The company confirms that the form and context in which the Competent Person’s findings are presented have not been materially modified from the original market announcement.

For Additional Information refer TKM ASX Announcements

<https://www.trekmetals.com.au/asx-announcements>

Approved for Release by the Board